

TURTLE WATCH

School Accreditation Application

Tick at least three of the following activities your school has completed during the last year:

Tick	Turtle Watch Activities	Date Completed	Evidence Attached
e.g. ✓	Participate in a wetlands/bushland planting activity.	23/6/14	Link to school website news
e.g. ✓	Collect litter from a waterway environment.	16/11/14	Photo of students collecting
	Participate in a wetlands/bushland planting activity.		
	Collect litter from a waterway environment.		
	Evidence of monitoring oblong turtle nesting site.		
	Conduct at least one Turtle Watch lesson addressing e.g. external features, habitat, life cycle, threats.		
	Conduct at least one Turtle Watch lesson addressing links with Noongar culture and knowledge.		
	Conduct a Turtle Watch theme event at an assembly to launch the nesting season.		
	One class commit to being the Turtle Watch program leader and do at least two feature articles in the school's newsletter or over the PA during the active season.		
✓	Design a Turtle Watch poster for display somewhere around the school or beyond.	8/3/17	
✓ ✓	Have a Turtle Watch display in the main foyer of the school/local shopping or eco centre for the wider community for one week during Term 1 or Term 4.	27/2/17	all the students wrote a recount of the excursion excursion photos in school newsletter
✓	Create, label and display oblong turtle artworks.	5/4/17	art lessons with art specialist
✓	Create, label and display oblong turtle diorama with model turtles and habitat depicted.	14/3/17	fact finding displayed on a turtle shell
	Students present a workshop for a different audience to teach others about oblong turtles.		
	Participate in a fund raising activity for Turtle Watch.		
	Other – prior approval from the Turtle Watch Committee required.		

Name and Address of School: South Lake Primary School - 62 Mason Court, South Lake

Name and Email of Contact Person: Jill Morgan; jillian.morgan@education.wa.edu.au

Please email the completed form and evidence to: info@aaeewa.org.au and mark to the attention of: Turtle Watch Committee Convenor.

Thank you for your participation in this vital conservation initiative.

NEWSLETTER

Term: 1 Issue: 3

3 March 2017

AN INDEPENDENT PUBLIC SCHOOL



Strive • Believe • Achieve

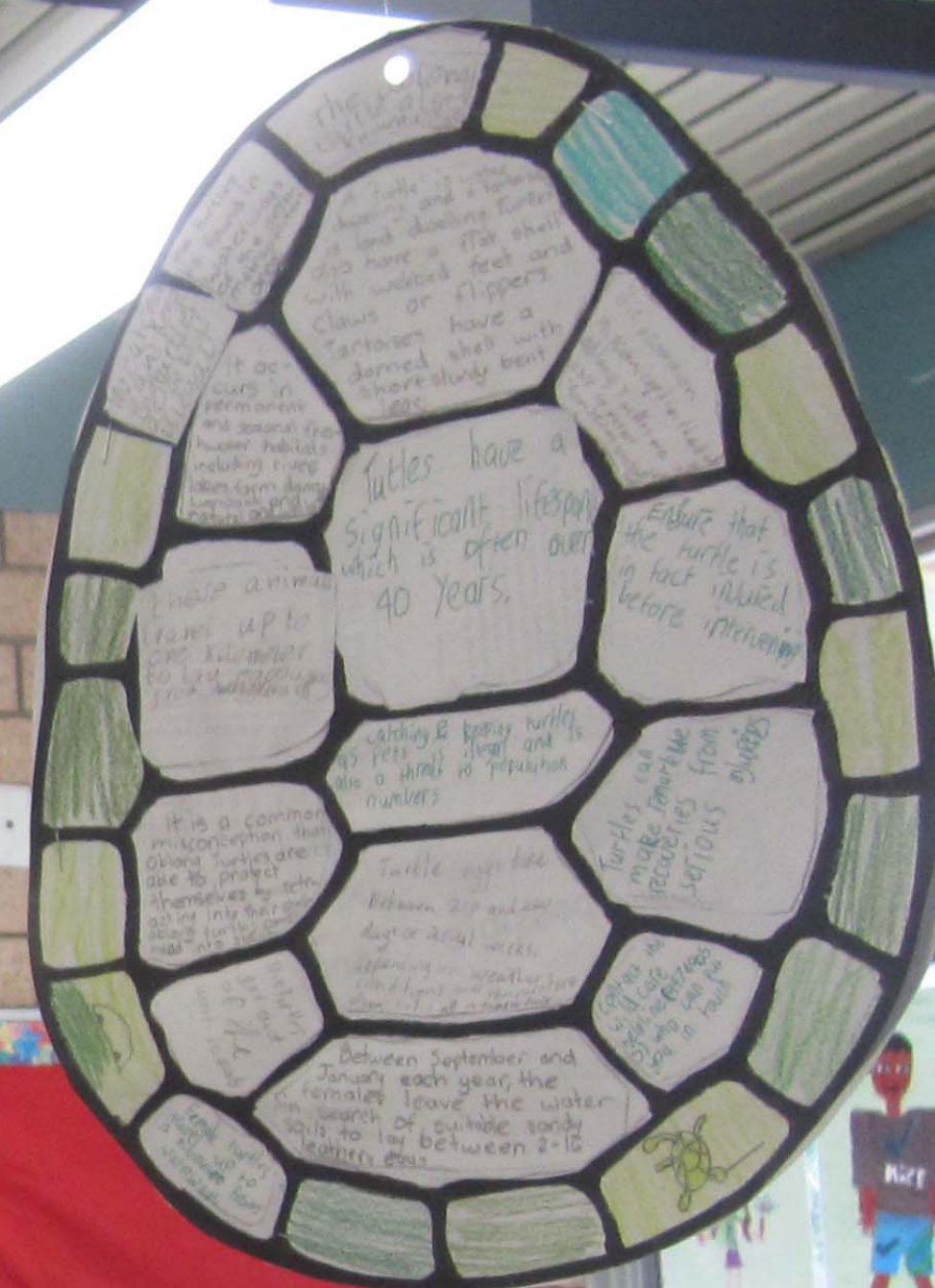


A Block students had a great time at the Bibra Lake Wetland Centre
"TURTLE WATCHING"



SOUTH LAKE PRIMARY SCHOOL
62 Mason Court
SOUTH LAKE W A 6164

Phone: (08) 9417 2998 Fax: (08) 9417 2223
email: SouthLake.ps@education.wa.edu.au
www.southlakeps.wa.edu.au



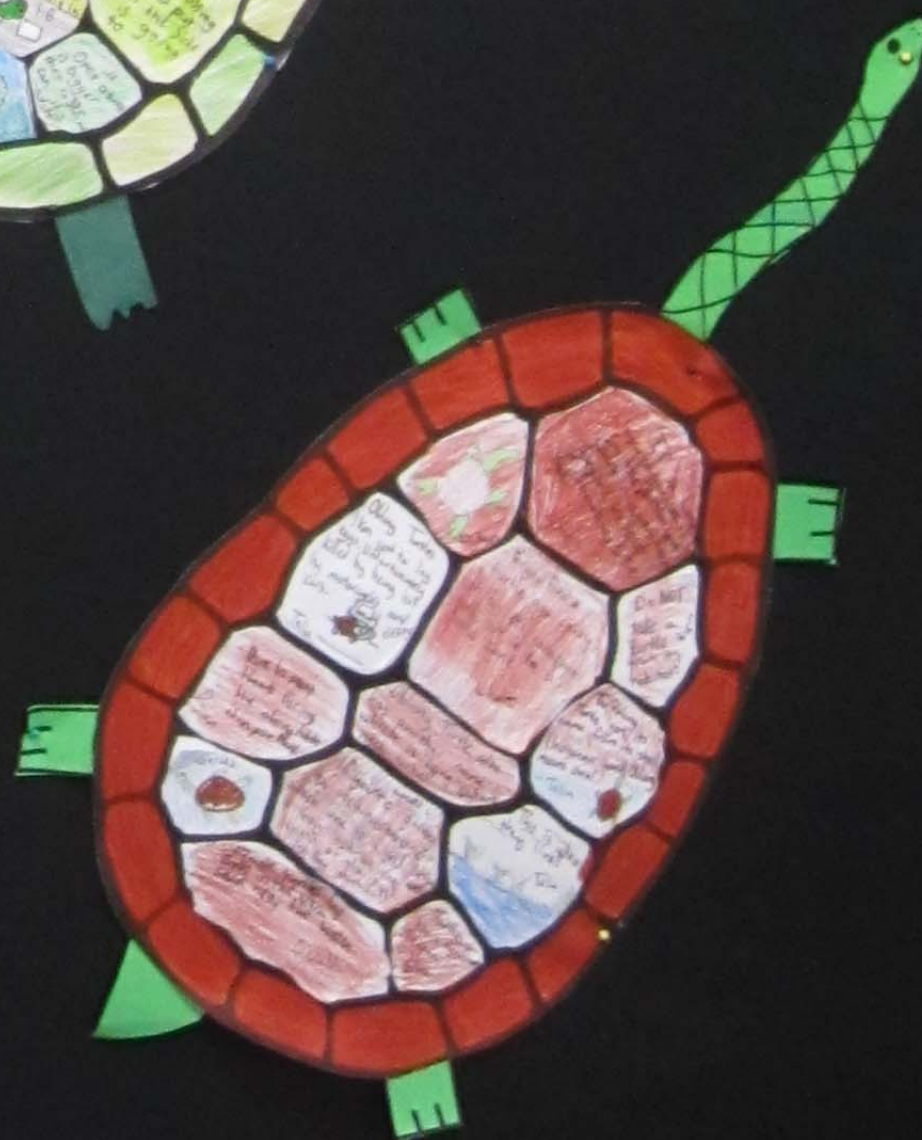
- To Entertain
- To Instruct
- To Persuade
- A Record
- To Inquire
- To Socialise
- To Explain
- To Describe

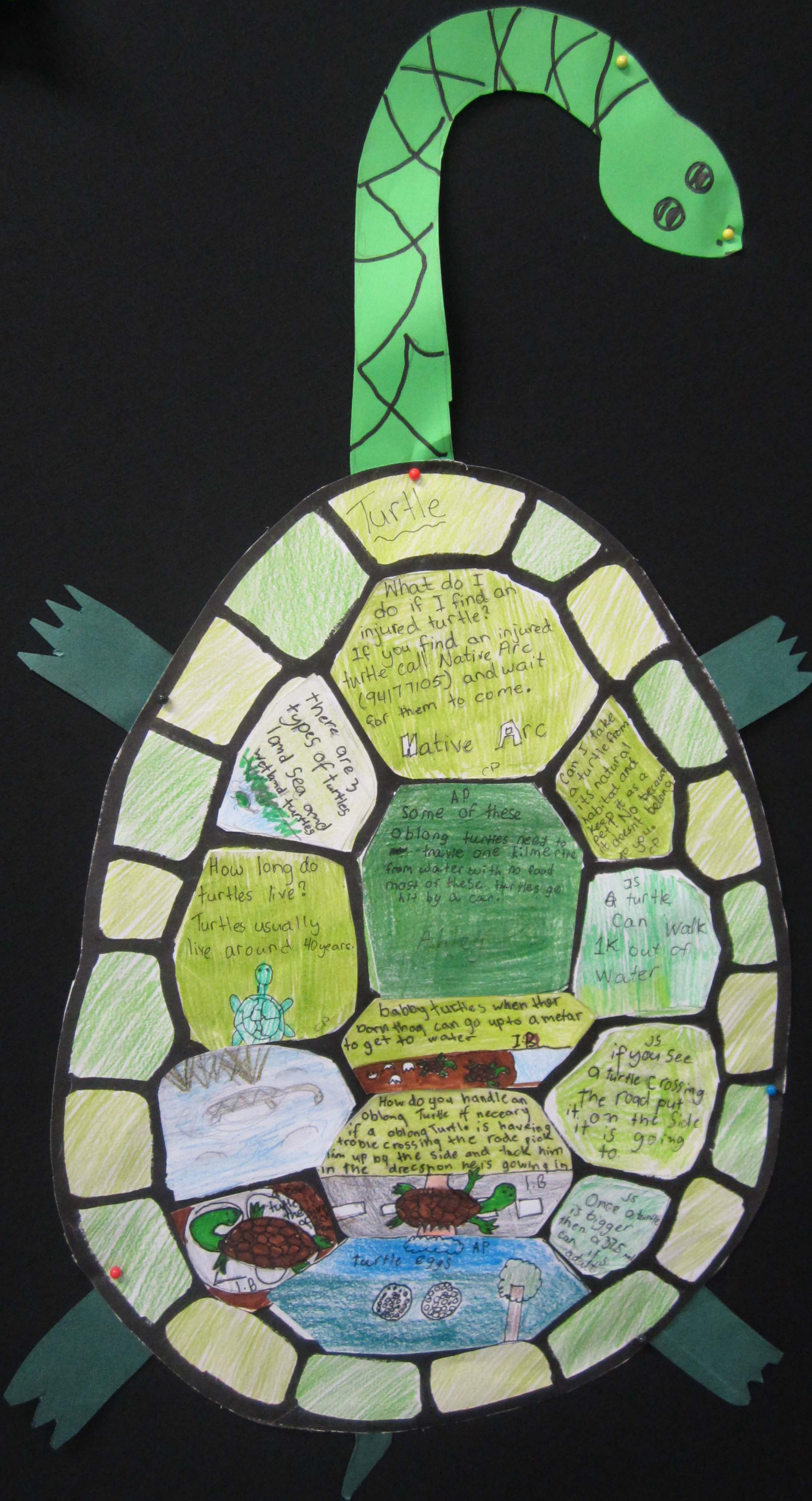
CHEMISTRY

oxygen
element
energy
hydrogen
compound
base
atom
structure
chemist
solid
gas
acid
crystal
carbon
sodium
liquid
experiment
uranium
molecule
substance

* Certain
impossible
even chance
likely
unlikely







Turtle

What do I do if I find an injured turtle?
If you find an injured turtle call Native Arc (941 771 05) and wait for them to come.

Native Arc

There are 3 types of turtles
Land Sea and Wetland turtles

How long do turtles live?
Turtles usually live around 40 years.



Some of these oblong turtles need to travel one kilometer from water with no food most of these turtles get hit by a car.

Can I take a turtle from its natural habitat and keep it as a pet? No because it doesn't belong to you.

A turtle can walk 1K out of water

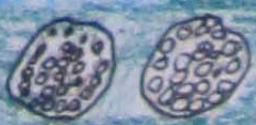
Baby turtles when they born they can go up to a meter to get to water

How do you handle an oblong turtle if necessary if a oblong turtle is having trouble crossing the road pick him up by the side and tuck him in the direction he's going in

If you see a turtle crossing the road put it on the side it is going to

Once a turtle is bigger then a 375 ml bottle

Turtle eggs



edited
brackets

Makhai

B

RECOUNT

INTRODUCTION:	who	what	when	where	why
EVENTS:	length	✓	✓	✓	✓
CONCLUSION:	opinion, feelings	✓	✓	✓	✓
INTERESTING VOCABULARY	1	2	3		
SPELLING	1	2	3		
PUNCTUATION	1	2	3		

18

care of native and introduced animals alike, especially turtles, as

Explanation As we walked of the bus to the centre, we walked past a of activities beautiful gazebos, metal monkey bars and beautiful, off P2 long, wooden table and chairs. After placing our bags down in the centre, we walked into a big hall waiting for our announced first activity. After they introduced everyone they announced what the class would be doing. As I was announced they would be doing turtle rehabilitation with Diane, we strolled out the side-door toward the wild life classroom. We sat on blue fabric and metal chairs learning about: how far and where turtles travel to lay eggs, the parts of a turtle, how we and the environment may harm or kill turtles and ^{facts} facts about turtles. After we went to the Rehabilitation office / where they nurse the animals and last of all we went to see the tanks where they keep the turtles. ✓

Explanation After recess we went to ^{the} food chain activities with Dean. of activities We all went to a ~~medium~~ sized oval. We got given a random P3 animals out of ^{invertebrates} foxes, crustaceans, oblong turtles, red slider turtles, fish, frogs and humans. After we explained what our animal ^{was} is and whether our animal is native or introduced, we got into a line of who's at the top and bottom of the food chain: ^{Bottom invertebrates} crustaceans, fish, frogs, oblong turtles, red slider turtle, foxes, humans. Next we all got into a circle all mixed up, making sure the same animals were not next to each other, and got handed some string, starting from the bottom of the food chain



Imogen A2

